

AMBIENT TEMPERATURE SENSOR

AT 1000

ABOUT AT 1000



The AT 1000 ambient temperature sensor is specifically designed for robust and reliable ambient temperature monitoring such as solar PV monitoring application.

AT 1000 comes equipped with a robust weatherproof cable and top quality components ensuring the sensors achieve very high accuracy and are ideal for use in field environments monitoring. Radiation shield (optional) is available as protection accessories.

SPECIFICATION

- Type: Pt1000 1/3 class B
- Temperature range: -40...+85°C
- Sensor housing: INOX steel tube, 6 mm diameter, 50 mm length
- Cable: 3 m LiYC11Y, 4 x AWG 26, black, weather and uv-resistant
- Protection: IP67



FOR INQUIRY, PLEASE CONTACT IMC-NIPPON CORP.

www.imc-nippon.com

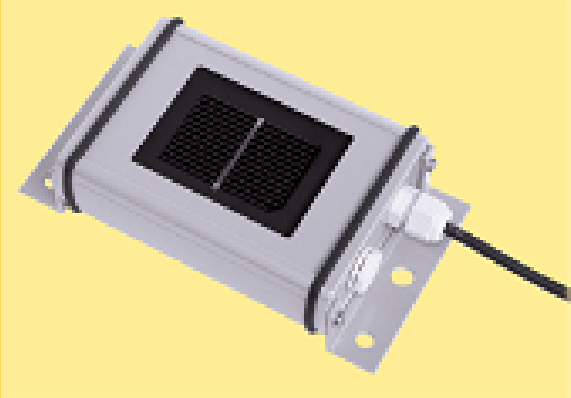
IRRADIANCE SENSOR

G T M 9 2 0 0 5

ABOUT GTM 92005

GTM 92005 irradiance sensor is a rugged and reliable solution for the measurement of solar irradiance designed specifically for the monitoring of Photovoltaic (PV) systems.

GTM 92005 is ideal as reference for the monitoring of PV systems thanks to its construction based on sensor elements corresponding to PV module. Its spectral response is comparable to PV modules as well as the similar inclination error (incident angle modifier) allow an exact analysis of PV energy yields using silicon sensor data.



SPECIFICATION

- Solar cell: Monocrystalline silicon (50 mm x 33 mm)
- Operating temperature: -35°C to 80°C
- Electrical connection: 3 m shielded cable
- Case, protection mode: Powder-coated aluminium, IP 65
- Dimension, weight: 155 mm x 85 mm x 39 mm, approx. 350 to 470 g
- Power Supply: 24Vdc (12 - 28Vdc)
- Output Signal: 0 to 1,400 W/m²
- Resolution: 0.1 W/m²
- Measurement Uncertainty: +/- 5W/m², +/- 2.5% of measurement value
- Si-Reference calibrated at Physikalisch-Technische Bundesanstalt, Braunschweig, Germany, National Metrology Institute of Germany.
- Calibration traceability- IEC 60904

FOR INQUIRY, PLEASE CONTACT IMC-NIPPON CORP.

www.imc-nippon.com



MODULE TEMPERATURE SENSOR

MT 1000

ABOUT MT 1000

The MT 1000 module temperature sensor is specifically designed for robust and reliable solar PV module temperature monitoring application.

MT 1000 comes equipped with a robust weatherproof cable and top quality components ensuring the sensors achieve very high accuracy and are ideal for use in field environments (PV module temperature) and industrial application.



SPECIFICATION

- Type: Pt1000 class A EN 60751
- Temperature range: -40...+85°C
- Sensor housing: aluminum block, self-adhesive
H x W x L: 6 mm x 12 mm x 35mm
- Cable: 3 m shielded cable, 2 x AWG 26, black, weather and uv resistant
- Protection: IP67

FOR INQUIRY, PLEASE CONTACT IMC-NIPPON CORP.

www.imc-nippon.com



WIND SENSOR

THCL435



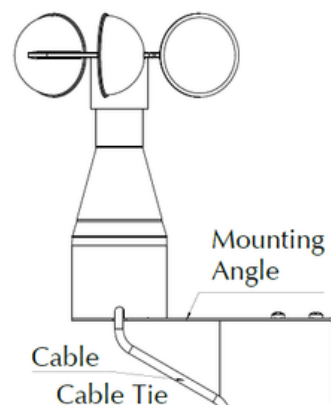
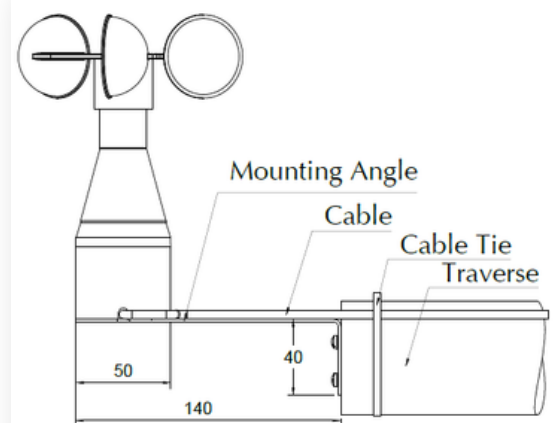
ABOUT THCL435 WIND SENSOR

The THCL 435 Wind Sensor is designed for the reliable acquisition of the horizontal wind velocity. The measuring value is output as frequency, which is in proportional to wind speed.

The measuring data available are ideally adapted to the input of data logger, in display instruments, as well as process control systems.

SPECIFICATION

- Sensor Type: Cup star anemometer
- Signal: Reed relais, 2,5 Hz/(m/s)
- Range: 0,9 to 40 m/s (60 m/s for short time)
- Accuracy: 0,5 m/s or 5% of reading
- Ambient temperature: -25 to +60°C (without icing)
- Cable: 5 m LiYC11Y, 4 x AWG 26, black, weather and uv-resistant
- Compliance with European Directives and Regulations standard EN 61000-6-2, EN 61000-6-3, EN 61010-1, EN 50581



FOR INQUIRY, PLEASE CONTACT IMC-NIPPON CORP.

www.imc-nippon.com